

Instructions For Use KT038-IFU

Rev. Date: June 12, 2018

Revision: 3

Page 1 of 2

626 Wilshire Blvd, Suite 410 Los Angeles, CA 90017 - Tel. +1 (408) 580-1396 www.genebiosolution.com

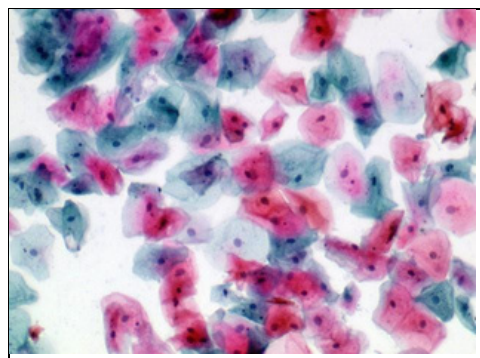
Papanicolaou (PAP) Stain Kit

Description: The Papanicolaou (PAP) Stain Kit is designed to differentiate between a variety of cells in vaginal smears for detection of vaginal, uterine and cervical cancer. In addition, this procedure is valuable for staining a variety of other bodily secretions and cell smears. The procedure was developed in the early 1940's by George Papanicolaou.

Nuclei:	Blue
High Keratin Cells:	Orange
Superficial Cells:	Pink
Erythrocytes:	Dark Pink
Parabasal Cells:	Blue/Green
Intermediate Cells:	Blue/Green
Metaplastic Cells:	May contain both Blue/Green and Pink.

Uses/Limitations: Not to be taken internally.
For In-Vitro Diagnostic use only.
Histological applications.
Do not use if reagents become cloudy.
Do not use past expiration date.
Use caution when handling reagents.
Non-Sterile.

Control Tissue: Gynecological Smear.
Any Superficial Cell Smear.



Kit Contents:

<u>Components</u>	<u>Volume</u>	<u>Storage</u>
Modified Mayer's Hematoxylin	500 ml	15-30°C
OG-6 Solution	500 ml	15-30°C
EA-50 Stain Solution	500 ml	15-30°C

Precautions: This product is a single-use, non-sterile, in vitro diagnostic device.
Avoid contact with skin and eyes.
Harmful if swallowed.
Flammable.
Keep away from sources of ignition.
Follow all Federal, State, and local regulations regarding disposal.



Gene Biosolution

626 Wilshire Blvd, Suite
410 Los Angeles, CA
90017

Tel: +1 (408) 580-1396

Instructions For Use KT038-IFU

Rev. Date: June 12, 2018

Revision: 3

Page 2 of 2

626 Wilshire Blvd, Suite 410 Los Angeles, CA 90017 - Tel. +1 (408) 580-1396 www.genebiosolution.com

Procedure:

1. Place slide in 95% alcohol for 5 minutes. Place slide in 70% alcohol for 5 minutes. Place slide in distilled
2. water for 2 minutes. Apply adequate Modified Mayer's Hematoxylin to completely cover cell smear and
3. incubate for 5 minutes.
- 4.
5. Rinse slide 1 time in distilled water to remove excess stain.
6. Rinse slide in tap water for 2 minutes..
7. Rinse slide in 2 changes of distilled water.
8. Dip slide several times in 95% alcohol and blot excess off.
9. Apply adequate OG-6 Stain Solution to completely cover cell smear to excess and incubate for 2 minutes.
10. Rinse slide gently using absolute alcohol.
11. Apply adequate EA-50 Stain Solution to completely cover cell smear to excess and incubate for 3 minutes.
12. Rinse slide gently using absolute alcohol.
13. Quickly dehydrate slide in 3 changes of absolute alcohol.
14. Clear slide and mount in synthetic resin.



Gene Biosolution

626 Wilshire Blvd, Suite
410 Los Angeles, CA
90017

Tel: +1 (408) 580-1396